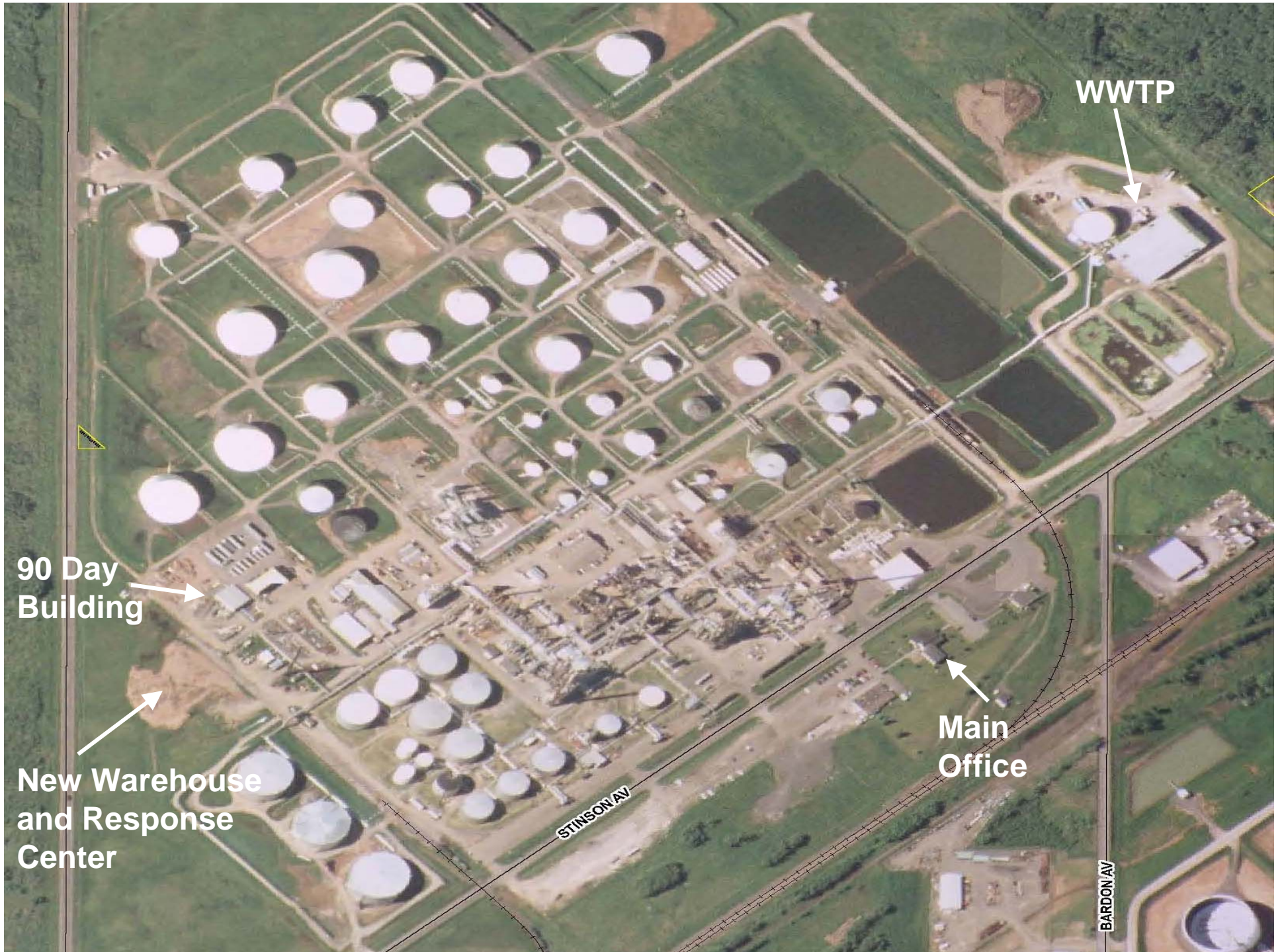


# Hazardous Waste Management

Murphy Oil USA  
Superior





WWTP

90 Day Building

New Warehouse and Response Center

Main Office

STINSON AV

BARDON AV

# Hazardous Waste Management

## ➤ Introduction

- Key Areas of Responsibility as a Hazardous Waste Inspector
- Inspection Frequency
- Resource Conservation and Recovery Act (1976-2006) and Federal Authorization Provided to States
- Established “Cradle to Grave” Concept for all Generators of Hazardous Waste

## ➤ Preparing for a Compliance Inspection

## ➤ Review Case File, Waste Manifest Records and Determine Generator Status as a Large Quantity Generator (LQG)

- LQG = Generator rate exceeds 2,205 pounds of hazardous waste in any one month, or more than 2.2 pounds of an acute hazardous waste
- Waste Characterization
- Characteristic Waste such as ignitable, corrosive, reactive, or toxicity
- Listed non-specific and specific wastes
- Much of the Oil Refining Hazardous Wastes are Listed Specific Wastes (waste streams come into contact with benzene as a primary constituent)

# Typical Waste Streams

- Filter Press Solids from the Wastewater TP (F037) 1,681,870 pounds/yr generated in 2005
  - Utilized for fuel blending by Systech in Fredonia, KS, for cement manufacturing
- API Oil/Water Separator (K051), shipped 178,940 pounds in 2005
  - Waste is currently incinerated at Veolia in Sauget, Illinois

# Hazardous Waste Management

- Spent Hydro-Treating Catalyst (K171)
  - 7,100 pounds shipped to Metal Recovery Firms (Gulf Chemical and Metallurgical) for extraction/smelting of rare metals such as platinum, nickel and molybdenum
- Crude Oil Refining Tank Bottoms (K169 sediment and sludge)
  - Waste shipped in 2006 after Crude Tanks were cleaned
  - Material is used in fuel blending at Systech's cement manufacturing facility

# Hazardous Waste Management

- Waste Characterization and Land Disposal Restrictions
  - Facilities need to meet or exceed Treatment Standards
  - Any new facility must notify EPA/DNR and obtain an EPA Identification Number for Tracking Waste Shipments and Annual Reporting


# Large Quantity Generator Responsibilities

- Establish a 90-Day Storage Area as a Regulated Area
- Package and label waste according to DNR and DOT requirements. Waste accumulation drums and containers must be inspected weekly and records need to be maintained on-site
- Comply with container storage requirements such as maintaining containers in good condition, no leaks, keep containers closed

# Large Quantity Generator Responsibilities

- (con't) except when adding or removing waste, and containers of H.W. must comply with accumulation amount and time limits
- Facilities must complete a hazardous waste shipping manifest and use a licensed H.W. transporter to ship waste to an approved disposal facility

# Large Quantity Generator Responsibilities

- Identify an emergency coordinator and establish procedures for responding to spills
  - Comply with record-keeping and annual reporting requirements
  - Document training procedures in written contingency plan, share copies of plan updates with local fire, police, hospital and emergency response agencies
  - Conduct annual training of personnel who handle waste, test emergency fire fighting/spill response equipment
- 

# Key Inspection Areas

- 90-Day Waste Storage Area Building
- Spill Response Supplies On-Hand
- Condition of Drums and Proper Labeling
- Filter Press Solids (F037) Load-out Area
- Roll-off Box Condition and Placarding
- Universal Waste Storage Area
- Waste Minimization Plans

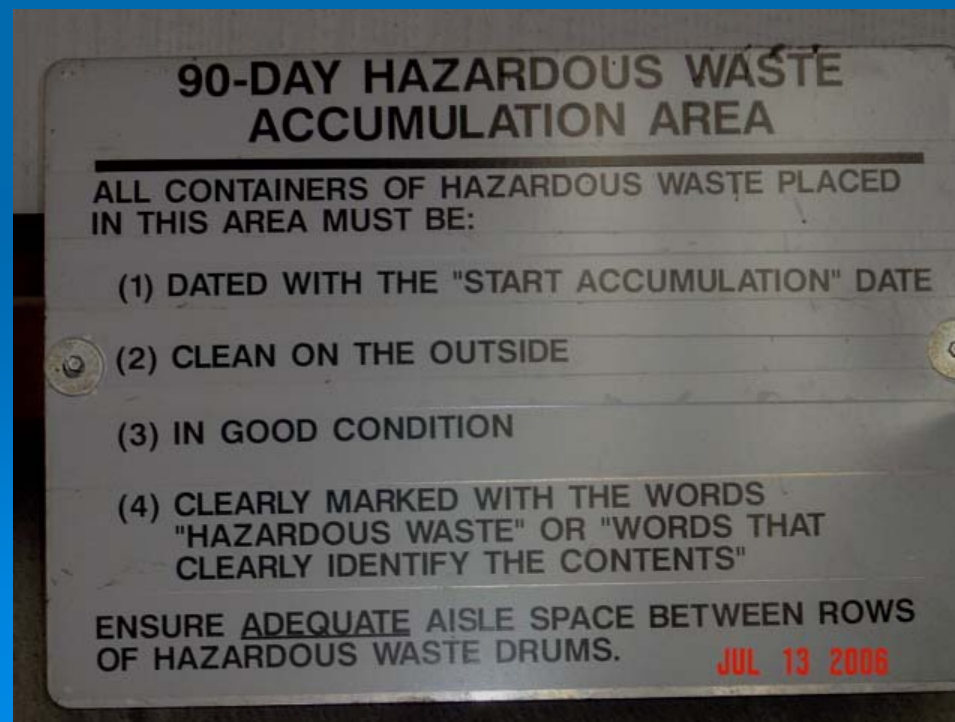
# 90 Day Building



# Spill Response Supplies On-Hand



# Condition of Drums and Proper Labeling



# Filter Press Solids (F037) Load-out Area



# Roll-off Box Condition and Placarding



# Universal Waste Storage Area



# Compliance Summary

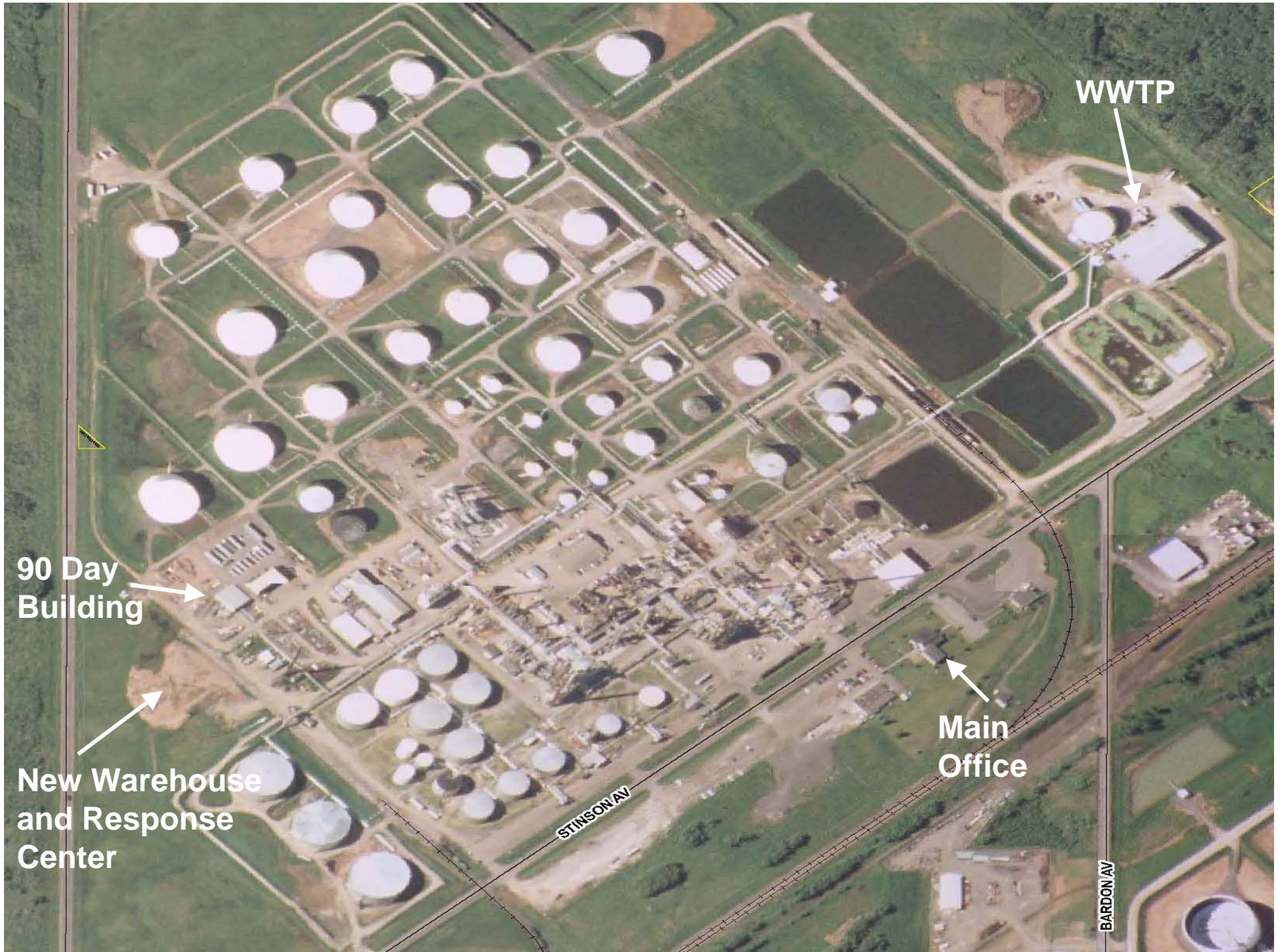
Trained Staff, Knowledgeable of H.W. Regulations

Excellent Record-Keeping System to Document Cradle-to-Grave Concept

Murphy Oil is Doing a Good Job of Managing its Waste Streams, Strive to Meet Facility Waste Minimization Goals

Good Inter-Agency Involvement on Simulated Emergency Response Training Exercises

Use Innovative Methods to Track Hazardous Waste Shipments (Tied to Waste Characterization Cross-Referencing)



WWTP

90 Day Building

New Warehouse and Response Center

Main Office

STINSON AV

BARDON AV